

Man's use of Timber

M.W.J. Stock

Huish's Grammar School, Taunton.

USE OF TIMBER — A 5-year project designed to show the various ways that man has used timber in his developing technology through the ages. The whole project is broken down into 5 separate parts, one part having been completed in each school year from February to May since early in 1970. There is a common approach to each part, namely:-

- a) The study of a particular aspect of the use of wood by reading, visits, films and the production of written material, photographs, drawings and maps.
- b) The construction of detailed scale models of the selected subjects wherever possible in the original hardwoods.

The topics so far covered are:-

- (1) Timber waggons
- (2) Wooden framed buildings and bridge structures
- (3) Wooden windmills
- (4) Early wooden boats
- (5) Wooden watermills

1. Timber waggon — by 2nd form boys.

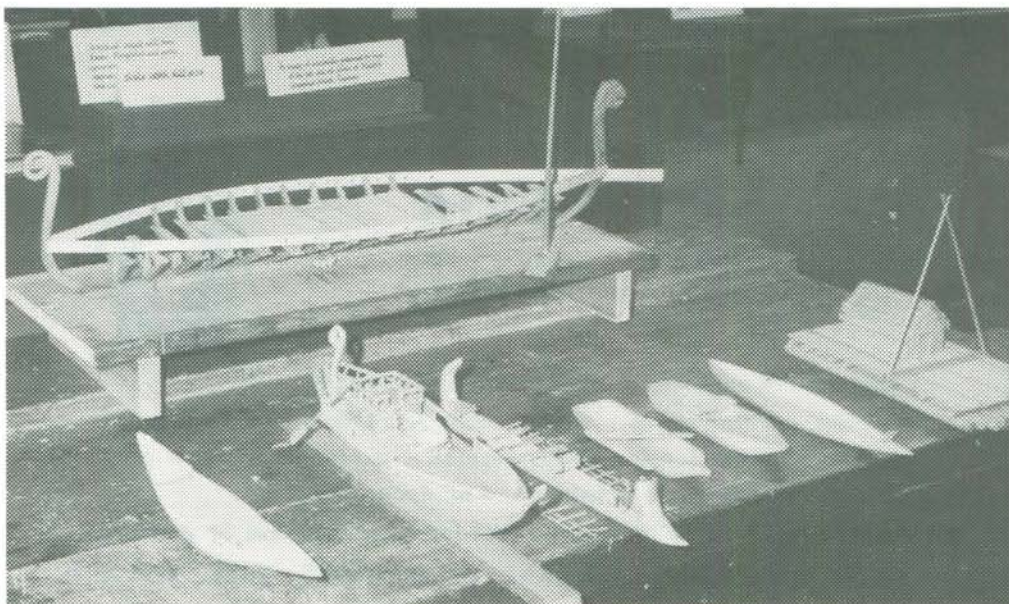
An example of a Wiltshire hay waggon was measured, photographed and sketched — notes made of timbers used and scale drawings made. A model was built using the original timbers elm, beech, oak and ash — the woods were studied, samples prepared and mounted and a study of the work of the wheelwright was made.

2. Timber buildings/bridges — 3rd. form boys.

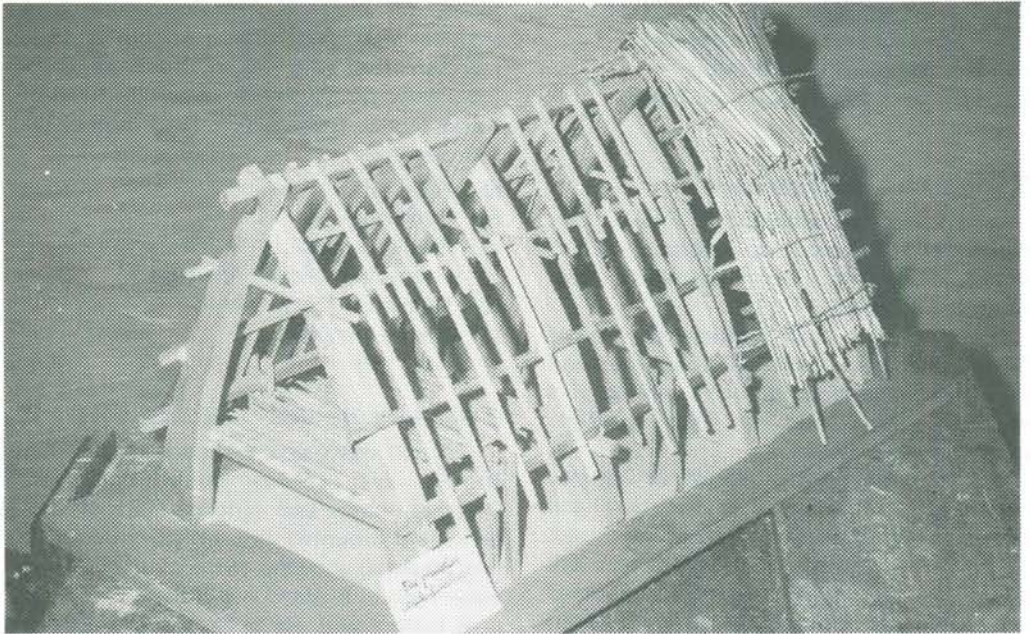
A general look was taken at timber buildings from the cruck to the laminated arch, and also the way lamination was used in small wooden bridges. Sketches were made and a few local examples of buildings and a bridge were inspected. Scale models made, mostly in hardwood but with some pine, of the following examples:-

- a) primitive cruck dwelling with reed thatch.
- b) Wealden jettied house.

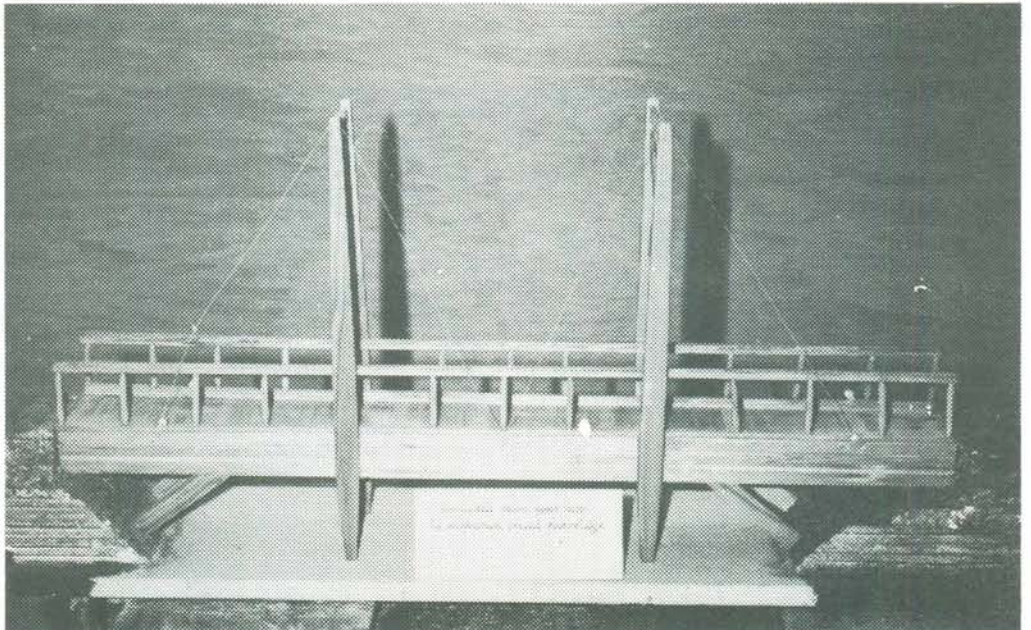
36



The development of wooden craft



Primitive cruch dwelling



Laminated beam in suspension bridge

- c) Typical mediaeval church structure.
- d) laminated arch church structure
- e) laminated-arch footbridge.
- f) laminated-beam small road bridge.

3. Windmills – 4th form boys.

The subject of windmills in England was studied with reference to a number of text books, films and local information (not much in Somerset).

For example, old documents showed 18th C. references and a 16th C. bench end in a local church produced a carving of a windmill. Also one or two surviving examples were noted.

Sketches and photographs of the 2 principal types were prepared, a distribution map prepared and some written study produced.

Two scale models built (1/8th and 1/2th scale) of a post mill and a smock mill based on well-preserved examples. These models are probably the best of the series.

4. Early wooden boats – 3rd. form boys

Reference made to "The Ship" as a

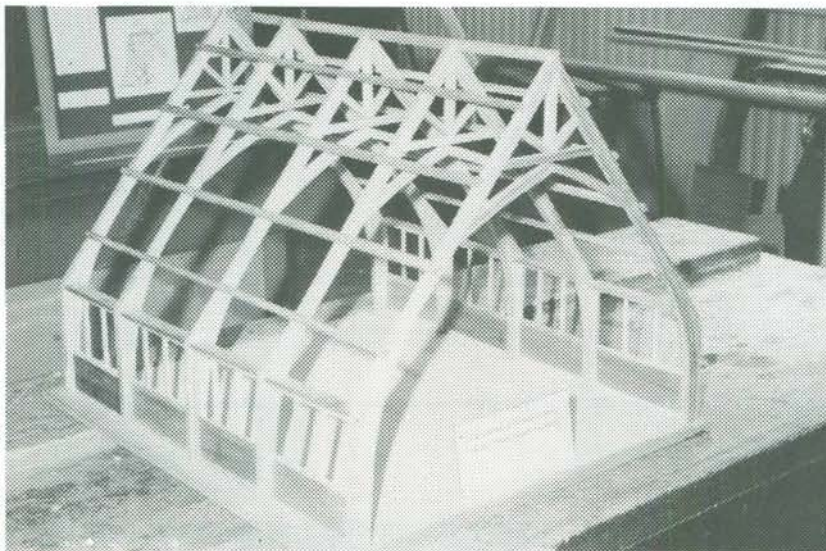
source of material. Drawings made and sketches and photographs mounted of a representative selection of boats to show progressive developments in certain types of vessel. Models then made in hardwood of the following:-

- a) Reed raft.
- b) Early dug-outs
- c) Greek warship
- d) Phoenician stitched side boat
- e) Roman merchant vessel
- f) Viking long ship
- g) Balsa raft

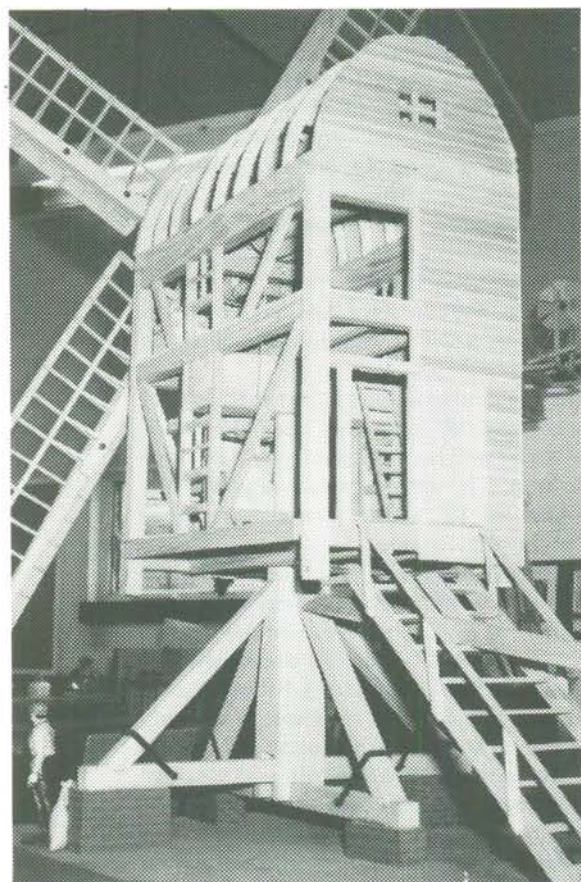
5. Wooden Watermills – 3rd. form boys.

A mill was visited and notes made. Film shown and various books consulted. Sketches, maps and written material prepared and mounted and a distribution map was prepared showing some of the existing water mills in England and Wales.

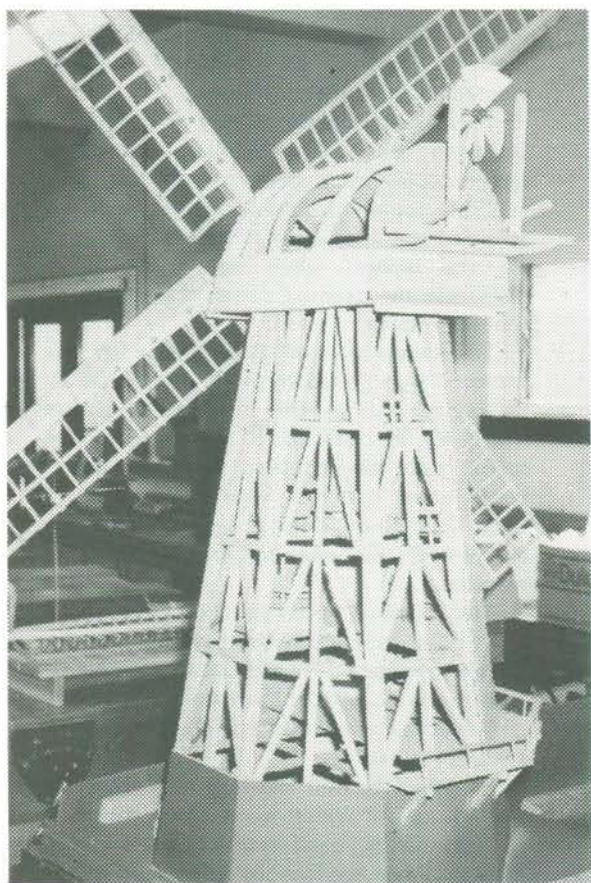
A scale model was built of a hybrid timber frame watermill, mostly in hardwood with deal cladding. In addition a smaller balsa model of a floating mill was made as a point of further interest.



Laminated arches in a timber frame Church



Buckinghamshire post mill



Essex smock mill